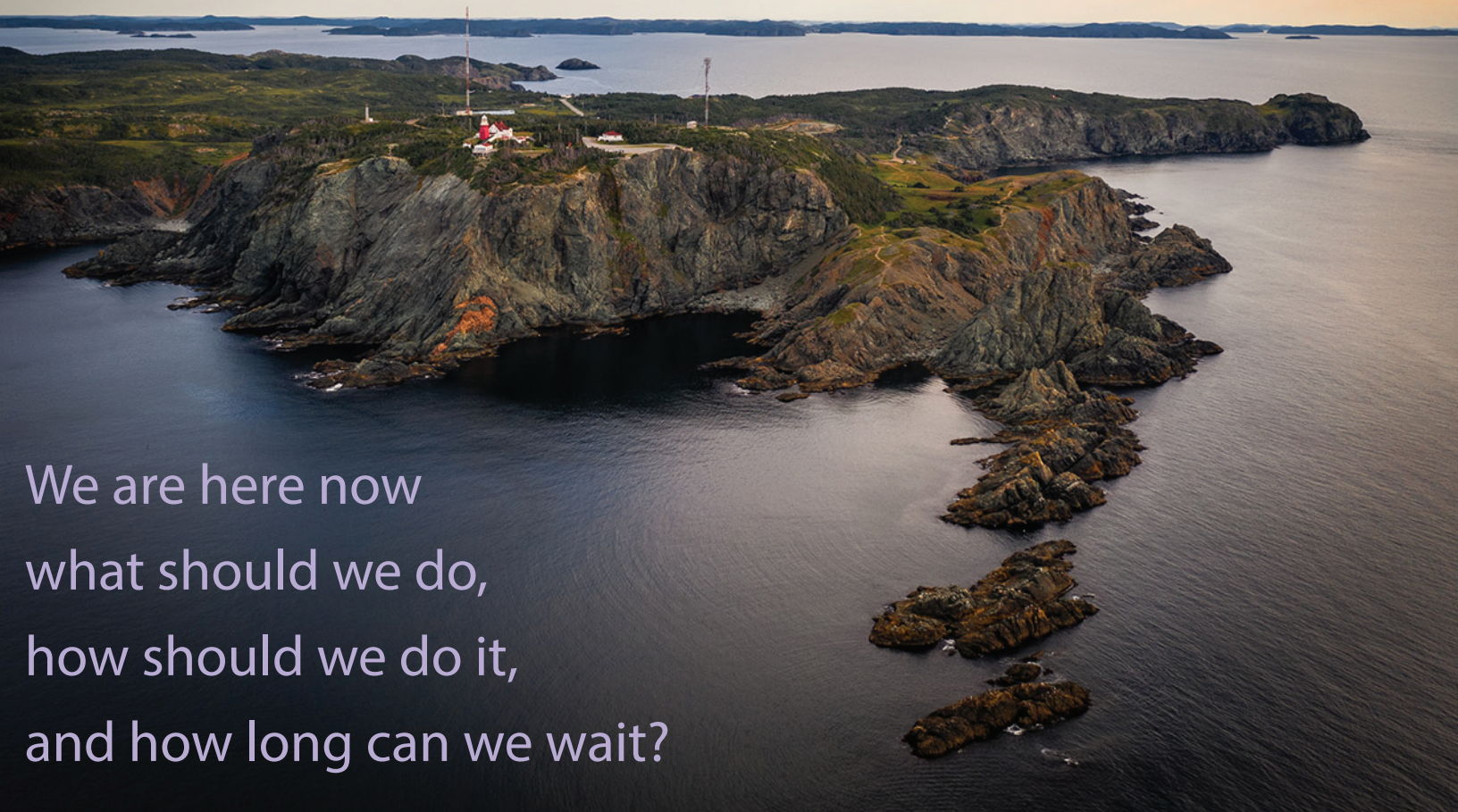


The Economic and Fiscal Trajectory of Newfoundland and Labrador



We are here now
what should we do,
how should we do it,
and how long can we wait?

Wednesday, September 15, 2021

Emera Innovation Exchange room 2007, Signal Hill Campus, 100 Signal Hill Road, St. John's, NL



| | |
|---------------|---|
| 8:00 - 8:15 | Pick-up Registration Kit and Light Breakfast |
| 8:15 - 8:30 | Dr. Lynn Gambin (Moderator): <i>Welcome & Land Acknowledgement</i> |
| 8:30 - 9:00 | On-site presentation by Honourable Siobhan Coady: <i>Where do we go from Here?</i> |
| 9:00 - 9:10 | Questions from audience |
| 9:10 - 9:40 | Virtual presentation by Dr. Trevor Tombe: <i>What are the prospects for doing nothing, and letting Ottawa pay through modified fiscal federalism?</i> |
| 9:40 - 9:50 | Questions from audience |
| 9:50 - 10:20 | On-site presentation by Dr. Laurence Booth: <i>Trajectory for interest rates and how the market for provincial bonds will be affected</i> |
| 10:20 - 10:30 | Questions from audience |
| 10:30 - 10:45 | Health/Nutrition Break |
| 10:45 - 11:15 | Virtual presentation by Cathy Bennett: <i>Why family friendly policies are essential to our Province, our population and our survival.</i> |
| 11:15 - 11:25 | Questions from audience |
| 11:25 - 11:55 | Virtual presentation by Dr. Jim Stanford: <i>Fiscal Policy and Economic Recovery: The Self-Inflicted Wounds of Austerity</i> |
| 11:55 - 12:05 | Questions from audience |
| 12:05 - 12:15 | Lunch Served |
| 12:15 - 12:45 | On-site presentation by Danny Williams: <i>Why we did what we did. And why we should have hope for the future</i> |
| 12:45 - 1:00 | Questions from audience |
| 1:00 - 1:30 | On-site presentation by Kerry Murray: <i>Is it a revenue problem, an expenditure problem or both and what should we do?</i> |
| 1:30 - 1:40 | Questions from audience |
| 1:40 - 2:10 | On-site presentation by Kendra MacDonald: <i>How should we expect technology to contribute to solving NL's immediate problems?</i> |
| 2:10 - 2:20 | Questions from audience |
| 2:20 - 2:30 | Health/Nutrition Break |
| 2:30 - 3:00 | Virtual presentation by Sister Elizabeth Davis and on-site presentation Dr. Pat Parfrey: <i>Health Accord NL – How Will it Influence the Province's Economic Trajectory?</i> |
| 3:00 - 3:10 | Questions from audience |
| 3:10 - 3:40 | On-site presentation by Dr. Vianne Timmons: <i>Memorial: A university with a twist or two</i> |
| 3:40 - 3:50 | Questions from audience |
| 3:50 - 4:20 | On-site presentation by Edward Roberts: <i>We did it to ourselves, can we undo it ourselves?</i> |
| 4:20 - 4:30 | Questions from audience |
| 4:30 - 4:40 | General questions and comments from audience |
| 4:40 - 5:00 | On-site presentation by Dr. Herb Emery and Dr. Wade Locke: <i>The role of analysis, what have we learned and how should we use it</i> |